



HyTec Oil Cooler for Hydraulic Fluid Systems



Solutions for the Elevator Consulting, Sales and Service industries

Introduced in 1995 and now installed worldwide, Noren HyTec Oil Coolers are relied upon by major hydraulic elevator manufacturer and service companies worldwide.

HyTec Oil Cooler

Sample Sizing Guide Questionnaire

Submit your sizing data at

http://www.norenproducts.com/products/hytec_coolers/htc_application_data_sizing.html

- For new installations we recommend our model 112E -

- System Sizing Information -

Motor HP:
Jack Size:
Line Size:
Number of Stops:
Line Length to Jack:
Reservoir Dimensions: L x W x H*
Inside Operating Depth: *

- Operational Information -

Oil Levels (measured from lip):
High Level: Low Level:
Peak Duty Cycle (Starts per Hour): *
Room Air Temp @ Peak Duty Cycle: °F*
Oil Temperature @ Peak Duty Cycle: °F*

- Environmental Information -

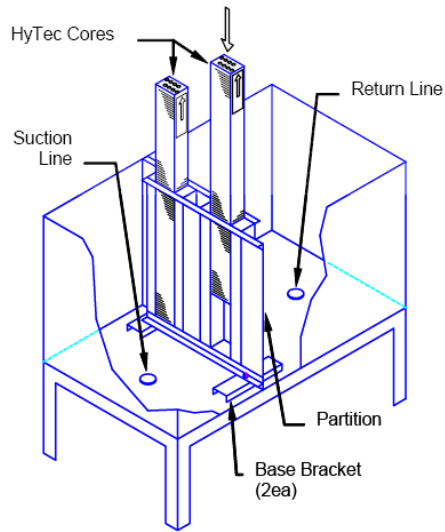
Room Dimensions: L x W x H
Number of Ventilation Openings:
Ventilation Fans: Yes No
Equipment Room Air Conditioning: Y/N

*Items Required for Preliminary Sizing

HyTec Oil Cooler



Whether you're modernizing an existing system or designing a new installation, contact us to discuss how Noren's HyTec Hydraulic Oil Cooler can prevent problems that occur due to overheating reservoir oil. Noise, chatter, hot oil odors and more can all be prevented!



HyTec Cooler™ Model D

Elevator Oil Cooling for Dry Systems

'D' models provide oil cooling for elevator systems with dry type hydraulic reservoirs. This design utilizes a partition to divert all hot return oil through the HyTec cores before it is drawn back to the pump. This partition – a kind of 'fence' – is sized to fit each application and custom designed and built by us to insure a tight fit, maximizing heat removal via hot oil flowing through our HyTec cores.

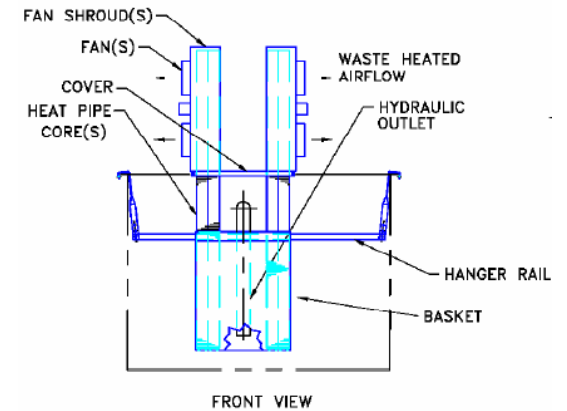


HyTec Cooler™ Model E

Elevator Oil Cooling for Submersible Systems

Our 'E' models provide oil cooling for elevator systems with typical submersible type hydraulic reservoirs. They utilize a 'basket' arrangement to capture and divert all hot return oil through the HyTec cores. The 'basket' is constructed of steel and is suspended on rails that install inside the oil reservoir. This design maximizes hot oil flow through the HyTec cores.

The heat is absorbed by our HyTec Heat Pipe Cores and quickly transported out of the reservoir to be carried away by the cooling fans above. This system provides an economical, efficient, low energy and zero maintenance solution for hydraulic oil overheating issues.



The fans used in our HyTec Oil Coolers are 6", 230 CFM with an MTBF exceeding 50,000 hours. They are highest quality AC fans with very low (.3 amps per fan) power consumption. As the only moving part in our design, you and your customer are assured many years of energy efficient and maintenance free service.

For a detailed guide to the models and appropriate applications for HyTec Oil Coolers, please visit

www.norenproducts.com