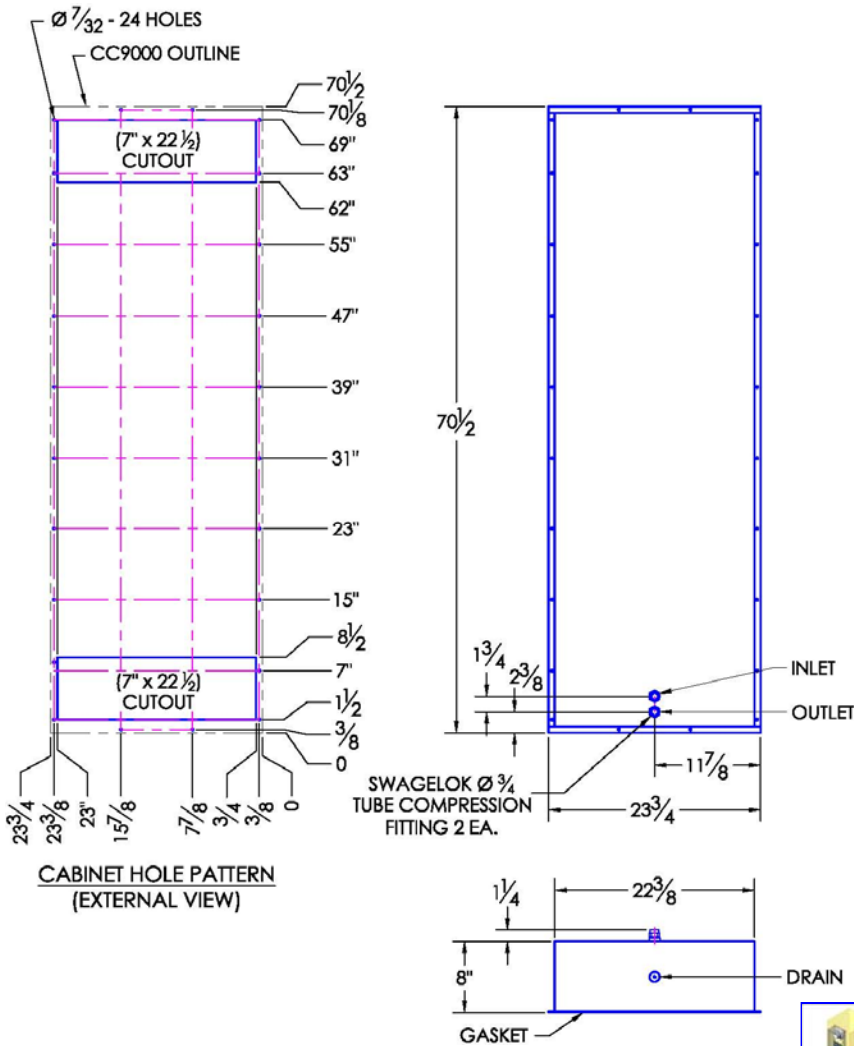




# CC9000 & CC9000P\* COMPACT CABINET COOLER AIR-TO-WATER FLUSH MOUNT MODEL

Model	Weight	Rating @ 40°C ΔT BTU / hr	Amps Current Draw at 115 volts AC	Fan Size 8 x 6"	Dimensions-Inches (H x W x D)
CC9000	79 lbs	57,000	2.4	8 x 6"	70-1/2 x 23-3/4 x 8

Efficiency : 417.0 Watts / °C ΔT based on average internal cabinet temperature.



[SEE HOW CABINET COOLERS WORK - CLICK HERE >>](#)

## SPECIFICATIONS

1. RATED COOLING: 16,680 WATTS (MOUNTED TO AN UNINSULATED 72" x 36" x 24" CABINET WITH 2 GPM OF WATER AT 20°C, 40°C AMBIENT AIR AND 60°C CABINET AIR TEMPERATURE).
2. DESIGNED FOR SURFACE MOUNTING ON THE OUTSIDE OF CABINET.
3. ALUMINUM HOUSING (COLOR IS BLACK) OR STAINLESS STEEL.
4. EXTERNAL WATER INLET & OUTLET CONNECTIONS.
5. EQUIPPED WITH MOUNTING GASKET TO MAINTAIN AIR TIGHT SEAL.
6. "P" UNIT IS PRESSURE TESTED TO ASSURE WATER TIGHT SEAL.
7. AVAILABLE WITH 115VAC, 230VAC, AND 12VDC, 24VDC, 48VDC FANS.
8. VERTICAL MOUNTING ONLY.
9. COOLANT WATER PRESSURE: THIS UNIT IS PRESSURE TESTED TO 100 PSI. SAFE WORKING PRESSURE IS 60 PSI.
10. RECOMMENDED COOLANT FLOW RATE (GALLONS PER MINUTE): 2 GPM
11. **FOR DESIGN, QUOTE, AND SIZING ASSISTANCE : CALL (866) 936 - 6736.**



Outside View



Inside View



Noren Products, Inc.  
1010 O'Brien Drive  
Menlo Park, CA 94025  
(650) 322 - 9500

CC9000 & CC9000P\*

CCS-PBD-7.2.2-883322-A

Subject to change without notice.