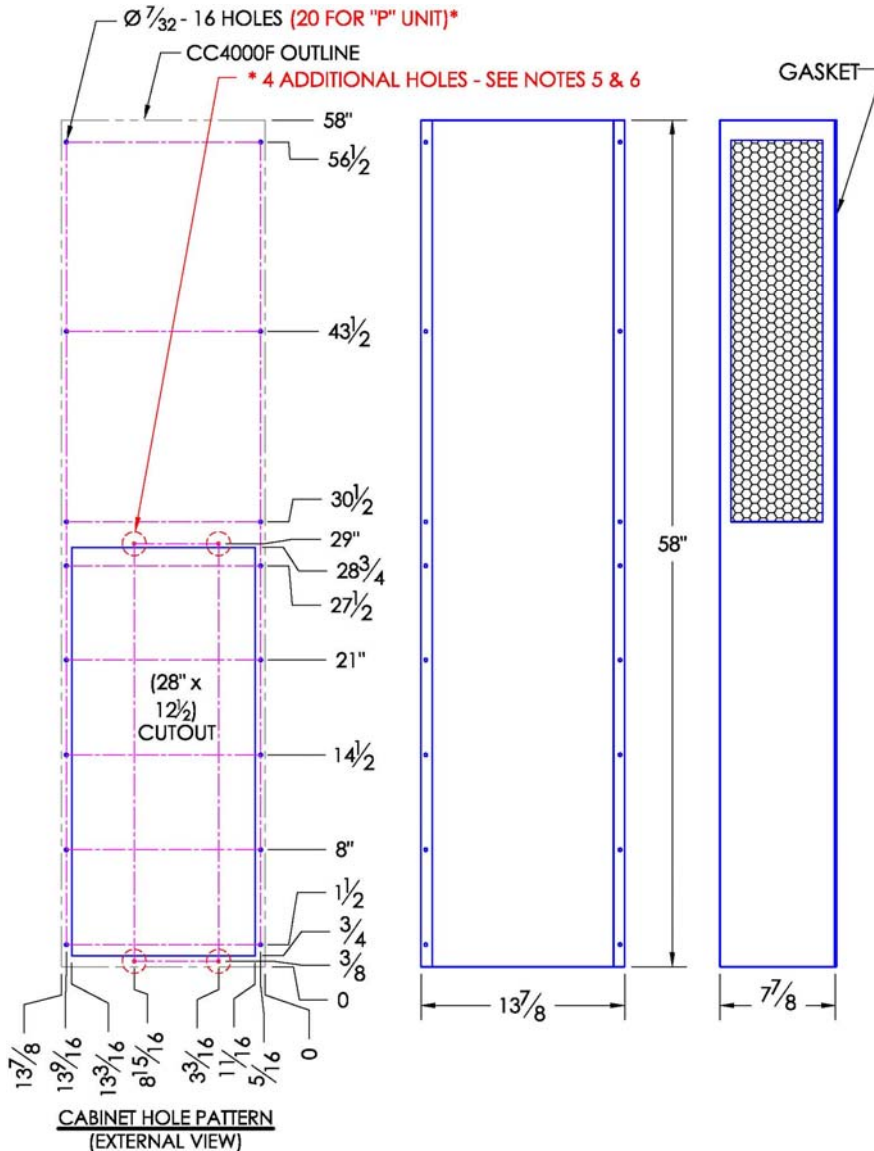
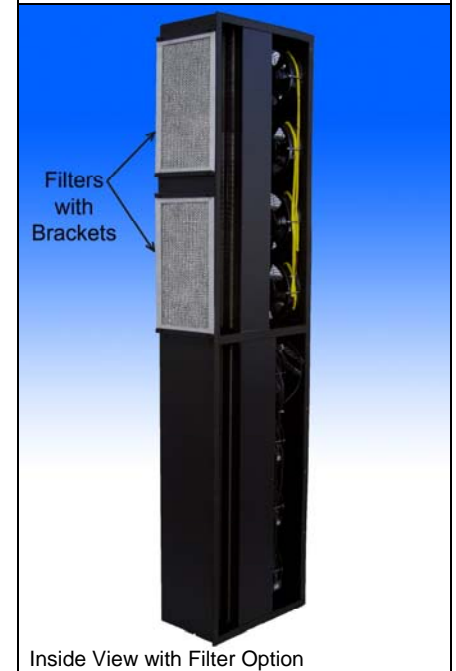




CC4000F & CC4000FP* COMPACT CABINET COOLER AIR-TO-AIR FLUSH-MOUNT MODEL

Model	Weight	Rating @ 40°C ΔT BTU / hr	Amps Current Draw at 115 volts AC	Fan Size	Dimensions-Inches (H x W x D)
CC4000F	60 lbs	13,700	2.4	8 x 6"	58 x 13-7/8 x 7-7/8

Efficiency: 200.0 Watts / °C ΔT based on average internal cabinet temperature.



SPECIFICATIONS

1. Rated cooling: 4,000 Watts at 20°C ΔT (200.0 W/°C, mounted to an uninsulated 72" x 36" x 24" cabinet).
2. Designed for surface mounting on the outside of cabinet.
3. Housing is aluminum (color is black). Stainless steel is available.
4. Equipped with mounting gasket to maintain air tight seal.
- *5. "P" unit is pressure tested to assure water tight seal.
- *6. Four additional mounting holes are for "P" unit only.
7. Available with VAC (115 & 230) and VDC (12, 24, & 48V) fans.
8. Unit may be mounted vertically (as shown) or horizontally.
9. Optional: inlet air-filter kit available upon request.
10. For design, quote, and sizing assistance: call (866) 936 - 6736.

Subject to change without notice.



Proudly made in USA



ISO 9001:2008
FM 554949



Noren Products, Inc.
1010 O'Brien Drive
Menlo Park, CA 94025
(650) 322 - 9500
www.norenproducts.com

CC4000F & CC4000FP*

CCS-PBD-7.2.2-883313-B